



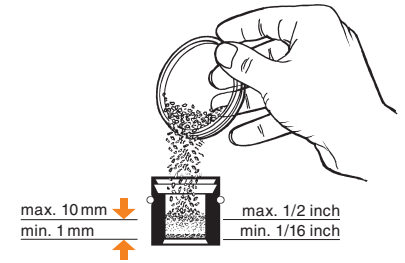
1. Switch heat on
(takes 3-5 min.)



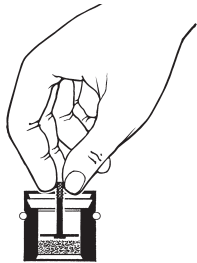
2. Choose temperature



3. Grind substance



4. Fill Filling Chamber

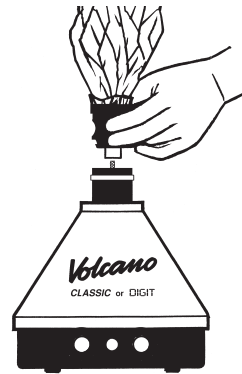


5. Insert Filling Chamber Insert

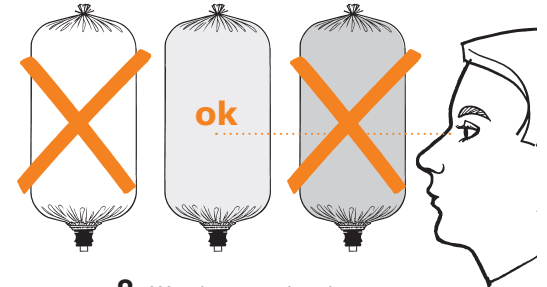
approx. 5 sec.



6. Preheat substance
if control lamp is off



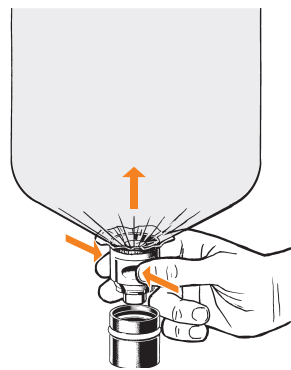
7. "Click" Valve Balloon
on Filling Chamber



8. Watch vapor density



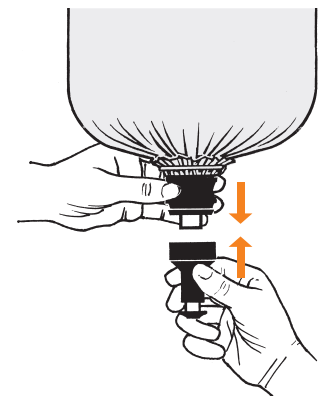
9. Remove full Balloon Unit



10. Detach Valve Balloon
from Filling Chamber



11. **Caution! Hot surface!**
Never leave Filling Chamber
on **VOLCANO**

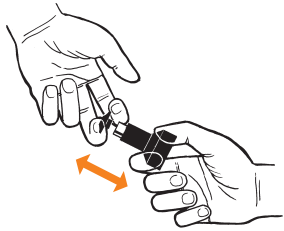


12. "Click" Mouthpiece
on Valve Balloon

Refer to the Instructions for Use for important safety and user advice. Do not operate the device without first reading and understanding the Instructions for Use!



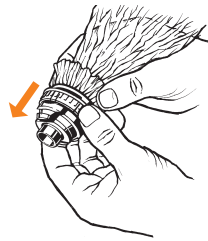
SOLID VALVE



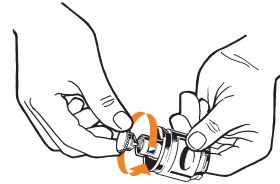
1. Pull off Lip Piece



2. Dismantled Mouthpiece



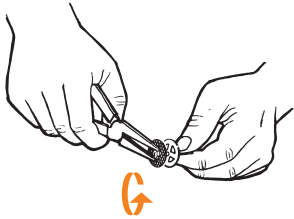
3. Pull off Slipping and Balloon



4. Screw off Valve Cap



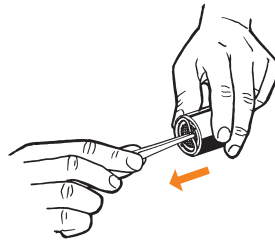
5. Dismantled Valve



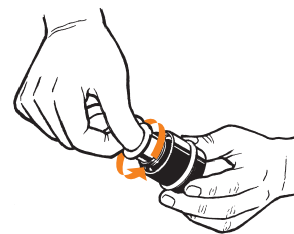
6. Screw off nut from Filling Chamber Insert



7. Dismantled Filling Chamber Insert



8. Pull off Filling Chamber Ring



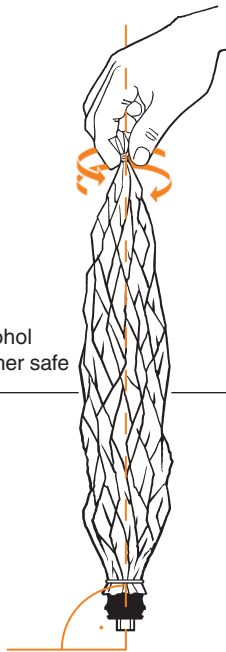
9. Screw off Filling Chamber Cylinder



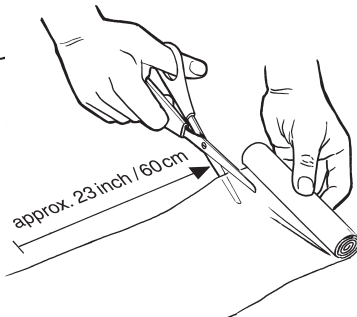
10. Dismantled Filling Chamber



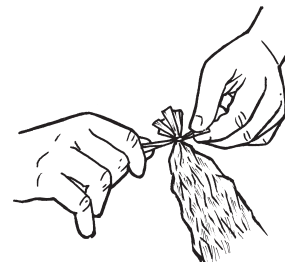
11. Manual cleaning with alcohol (min. 90%), also dishwasher safe



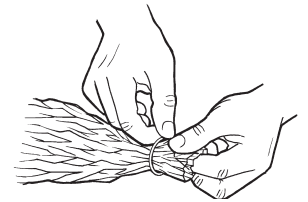
16. Align Valve Balloon to Valve



12. Cut off a piece of approx. 50-60 cm (19-23 inch)



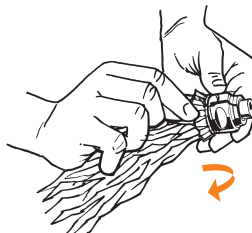
13. Tie close at one end



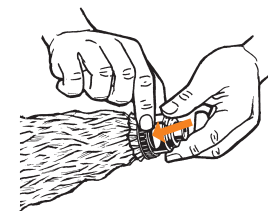
14. Attach Balloon Fixation Ring



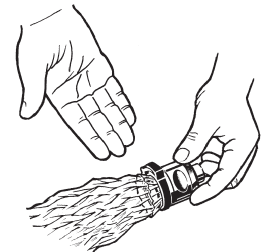
15. Attach Balloon to Valve



17. Evert balloon mantle



18. Attach Slipping to secure Balloon



19. Ready to use